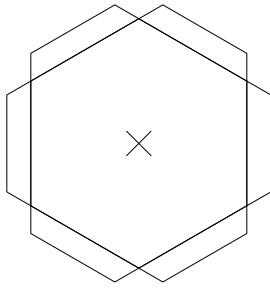
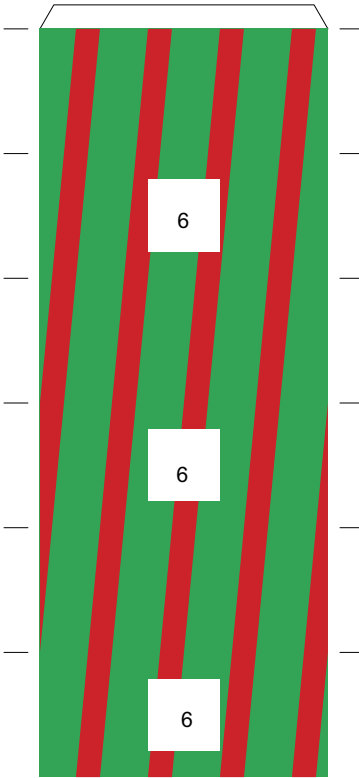


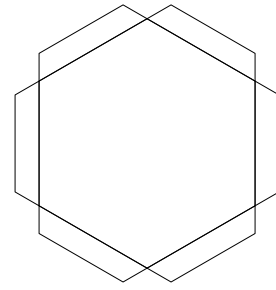
2



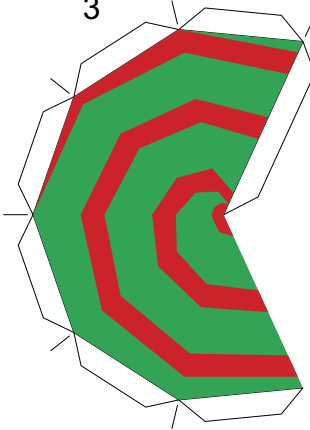
1



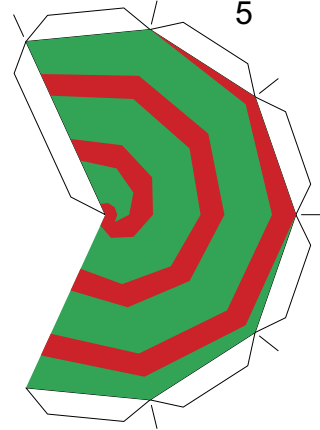
4



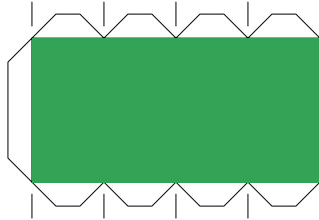
3



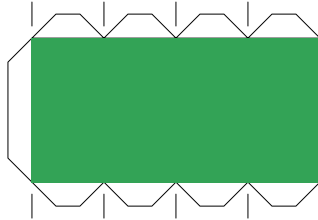
5



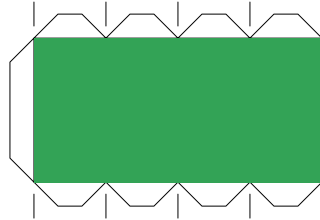
6



6



6



7



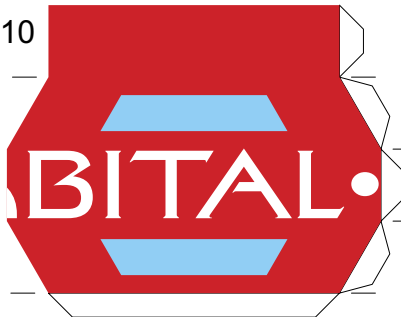
8



9



10

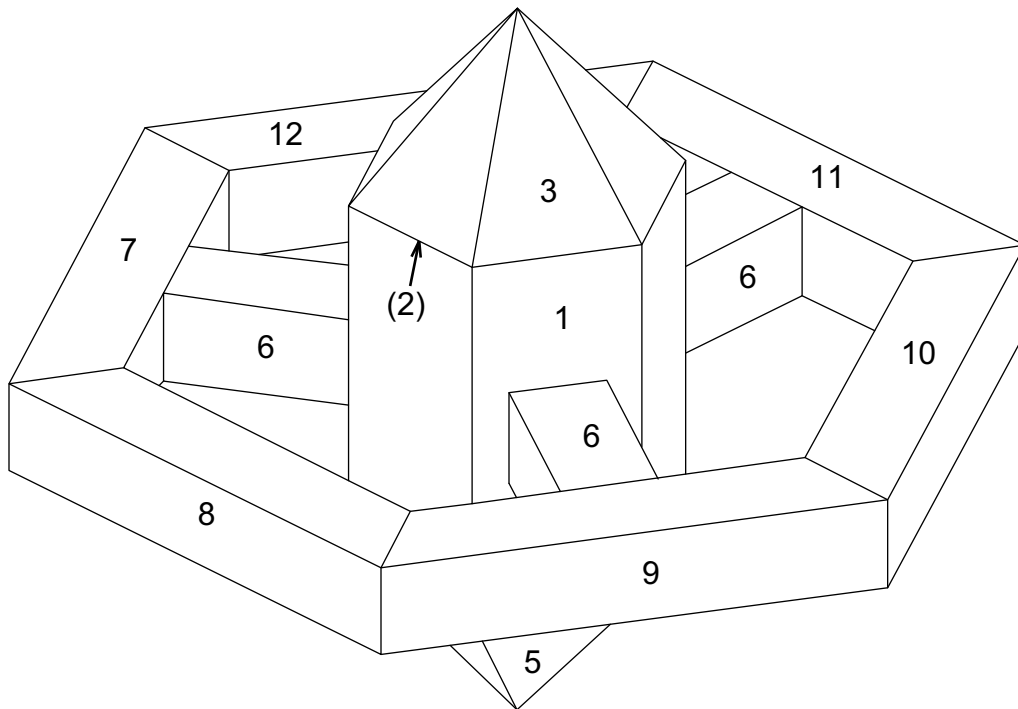
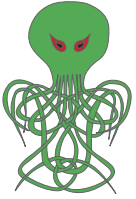


11



12





- Score all tabs and along guide lines.
- Part 2 is the TOP of part 1. Pierce at cross mark and insert a loop of thread if you want to hang your model.
- Part 3 glues onto of part 2. Put the loop of thread up through the point of part 3 to hang the model.
- NOW glue part 2 to part 1 with the seam of part 3 aligned with the seam of part 1.
- Part 4 is the BOTTOM of part 1. Part 5 glues onto part 4.
- NOW glue part 4 to part 1 with the seam or part 3 aligned with the seam of part 1.
- Parts 6 glue to the white squares on part 1.
- Parts 7 through 12 attach end-to-end in numerical order. Make sure you don't turn one over, or the letters on the rim won't line up. (A friend has suggested adding some weight inside these parts to allow the model's use as a top.)
- NOW carefully slip the ring assembly over the hub assembly and glue the open ends of parts 6 to the inner sides of parts 7, 9, and 11, or to the inner sides of parts 8, 10, 1nd 12.