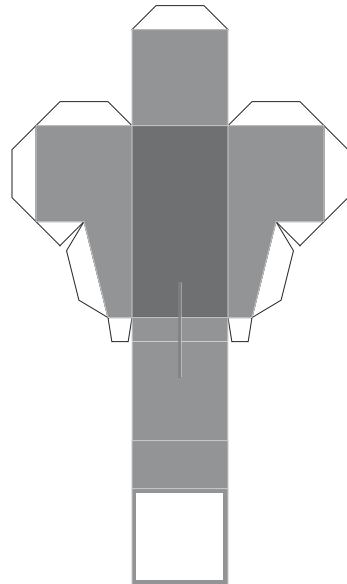
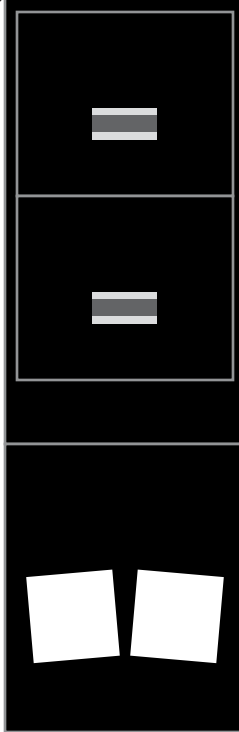
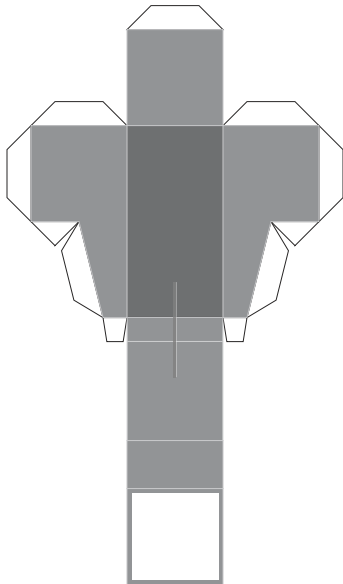
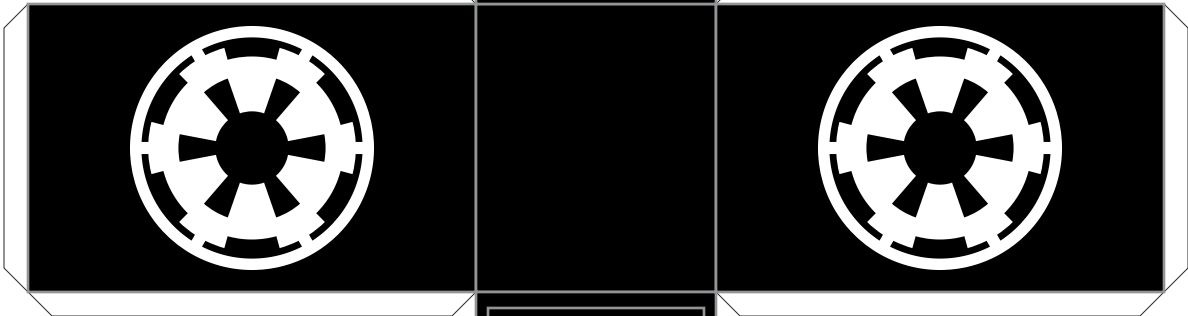
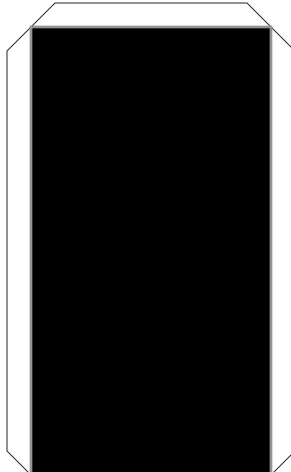
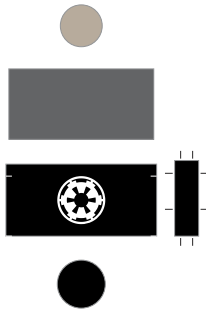
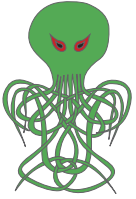


7.50 inches [19.05 cm]

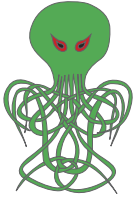
Inches



10.00 inches [25.40 cm]

cm

cm



This is a model of a HonK-2 Imperial Paperwork Droid in 1:12 scale (approximate). The finished model stands just under 3 inches (76 mm) tall, less the coffee mug.

Printing this model on glossy paper, or applying a gloss coat after assembly, is recommended for best appearance.

Scoring should be obvious, and assembly of the Droid simple enough not to require detailed instructions.

The coffee mug is more difficult due to its small size, and needs a bit of explanation. There are two rectangular pieces; the grey piece and the black piece with the Galactic Empire emblem should be glued together back-to-back and overlapped by about half their length:



Before the glue sets completely, wrap this piece around a dowel or other slim cylinder to shape it, then glue the overlapping backs together.

Look closely at the seam and you will see a short white line crossing it. This line is close to the TOP of the mug. Press the brown disc into the BOTTOM of the mug with the colored side in; it should fit snugly. Apply glue to the back of this disc and the edge of the mug, then attach the back of the black disc to close the bottom.

The handle is scored in four places as indicated. Carefully fold the handle away from the printed side along the long scores until you can glue it flat at the back. After the glue sets, bend the handle away from the printed side at the short scores; the shorter end bends to a right angle; the longer end bends to about 30 degrees. Apply glue to the short end and attach it to the white line on the mug. Apply glue to the longer end and attach it over the seam of the mug just at the bottom edge.



Gluing the mug to the top of the Droid is optional