

This is a model at roughly 1:13,000 scale of CVS-0008, a “Neapolitan” class freighter, from Steph Cherrywell’s Web comic “Intragalactic” ( <http://intragalacticcomic.com/> ).

Please read ALL of these instructions before printing your model!

Print your model on at least a medium weight (165 gsm or about 0.008 inch thick) index card stock. The first two parts pages should be printed on a heavier (255 gsm or about 0.012 inch thick) card stock if possible, otherwise the model ends up being a little bit flimsy.

Parts page three is fine on 165 gsm card. Once you’ve printed parts page 3, flip it over and load it into the printer again, then print parts page 4 onto the back to color the backs of parts 10 and 11.

Step 1: Starting with parts 1 and 2, score along all the fold lines and tabs. Cut out all the areas marked “Cut out.” cut all the little tabs in the two circular areas on part 1. Cut parts 1 and 2 out and pre-fold all the scored lines; all folds are away from the printed side. Glue parts 1 and 2 together along the three short tabs to make one large part. **DON’T GLUE ANYTHING ELSE YET!**

Step 2: Score, cut out, and pre-fold parts 3 through 6. Note that these parts fold up with the printed color on the inside and all the tabs on the outside. Glue each into an open boat shape with the five remaining tabs on each folded outward. Refer to the diagrams and the parts’ colors to place each in its proper location on parts 1 and 2, and glue the two long tabs of each into place. Make sure the parts’ edges line up with the edges of the openings in parts 1 and 2.

Step 3: Fold the long sides of parts 1 and 2 up and glue the bottom tabs of parts 3 through 6 into place, again being careful of their alignment. Now glue the long tab on part 1 to the back of part 2.

Step 4: Score, cut out, and pre-fold the four parts 7. These parts fold up with the color on the outside and the tabs on the inside. Fold and glue each part into a shape which will fit into the wells formed by parts 3 through 6. Set them aside.

Step 5: Score, cut out, and pre-fold parts 8 and 9. Once again, these parts assemble with the print on the inside and the tabs on the outside. Glue part 8 over the larger opening of the three in the pink end of part 2; the row of small rectangles (windows) inside the part should be toward the top (away from the free edge of that section of part 2). Repeat for the two parts 9 and the other two openings.

Step 6: Fold the end of part 2 with parts 8 and 9 up and glue it into place along its three tabs.

Step 7: Cut out parts 10. Score, cut out, and pre-fold the parts 11; score along the long light grey line and cut along the short ones to form square tabs. Cut out parts 12. Form each part 10 into a shallow shroud with the white tab facing outward. Glue the tab to the inside of the other end of the part so that no white shows. Form each part 11 into a cylinder with the white tabs facing outward. Glue the end tab to the inside of the other end of the part so that no white shows there. Fold the triangular tabs inward. Insert each part 11 into a part 10 as shown in the diagram so that the scored line of the square tabs is even with the edge of part 10. Glue the square tabs neatly to the inside of part 10. Fold all the triangular tabs inward. Insert a part 12 into each part 11 with the printed side to the inside. Push each part 12 down flat against the triangular tabs; turn the assembly over and glue all the tabs down against the part 12.

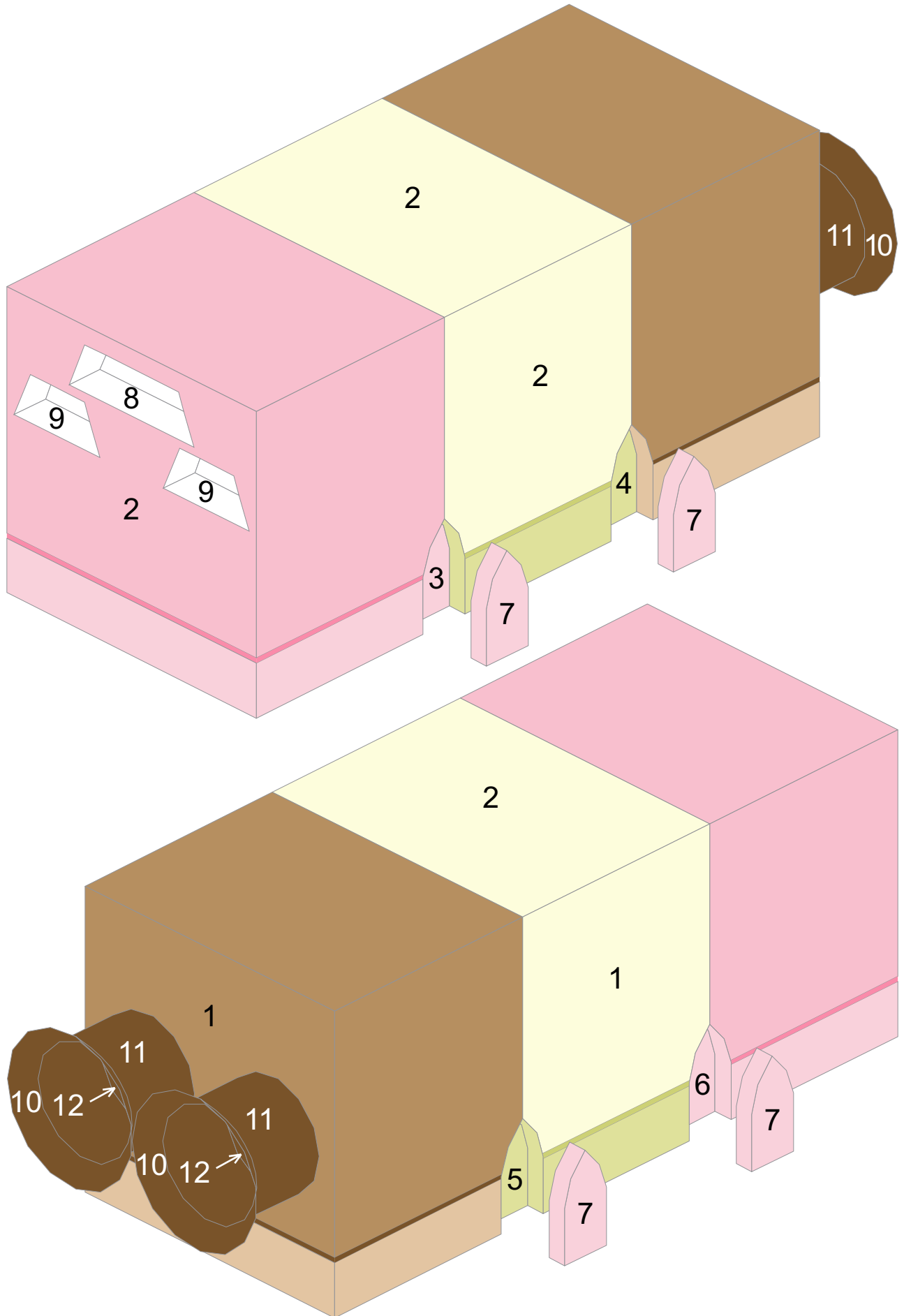
Step 8: On the remaining free section of part 1 fold all the small tabs around the openings inward. Fold the section up and glue it into place along its three tabs. Gently work the white end of a part 10+11+12 assembly into each of the openings just far enough to be stable; glue is optional if the fit is snug enough to hold the assemblies in place without it, otherwise remove each and apply glue to the ring of tabs, then reinsert.

Step 9 (optional): **WITHOUT GLUE**, insert a part 7 into each of the wells formed by parts 3 through 6. These represent boosters used for launch and appear nowhere else in the comic.

Have some ice cream and admire your handiwork; Captain Benjamin would be proud!

7.5 in (190.5 mm)

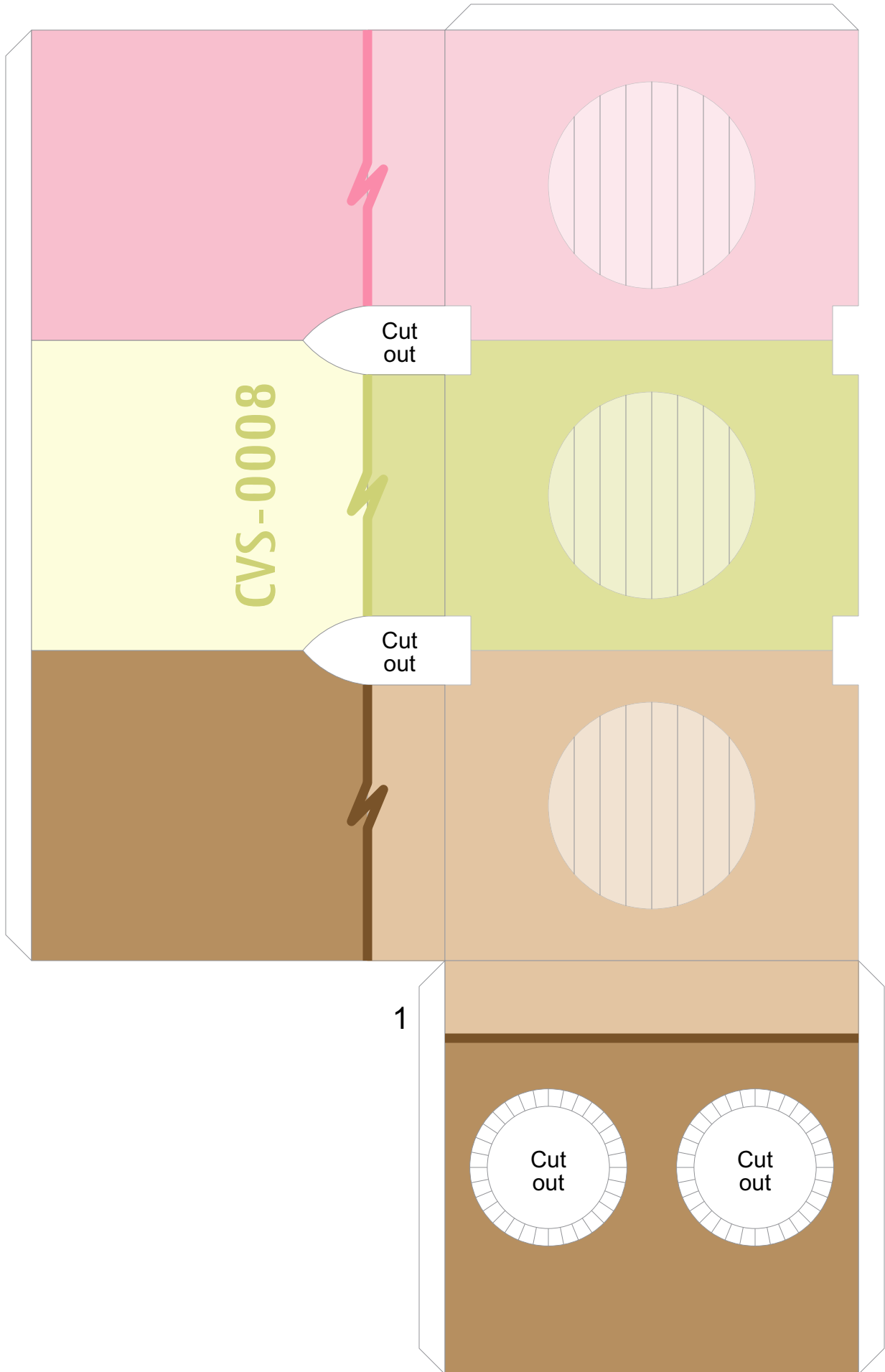
10 in (254 mm)

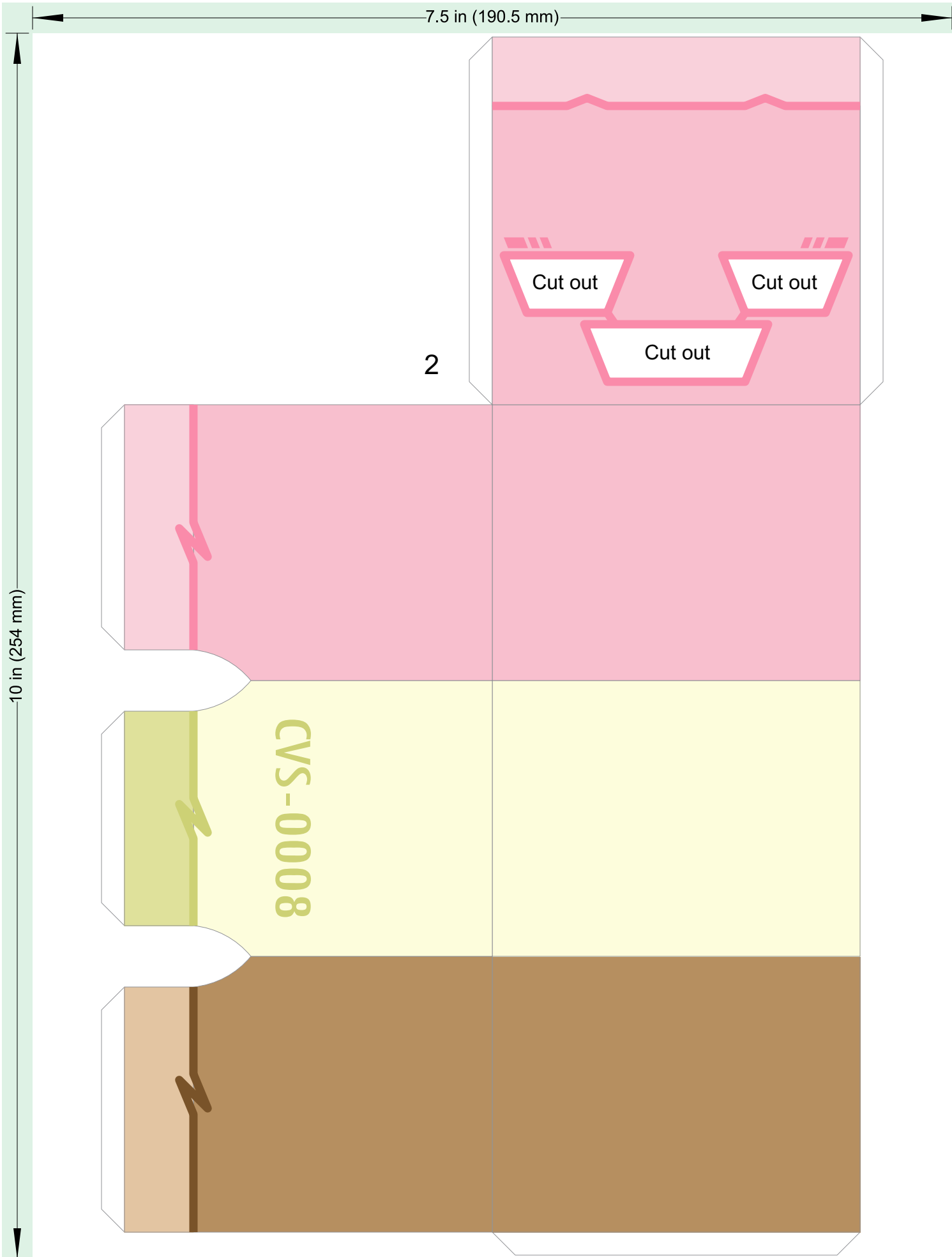


This model designed and copyright © 2009 by Mike Hungerford. E-mail: [hungerford.mike@gmail.com](mailto:hungerford.mike@gmail.com); Web: <http://users.sdccu.net/chthulhu2/models.html>

7.5 in (190.5 mm)

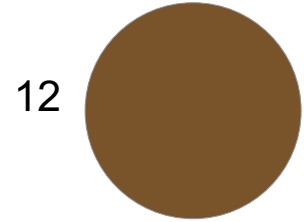
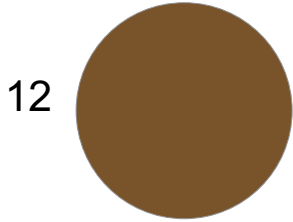
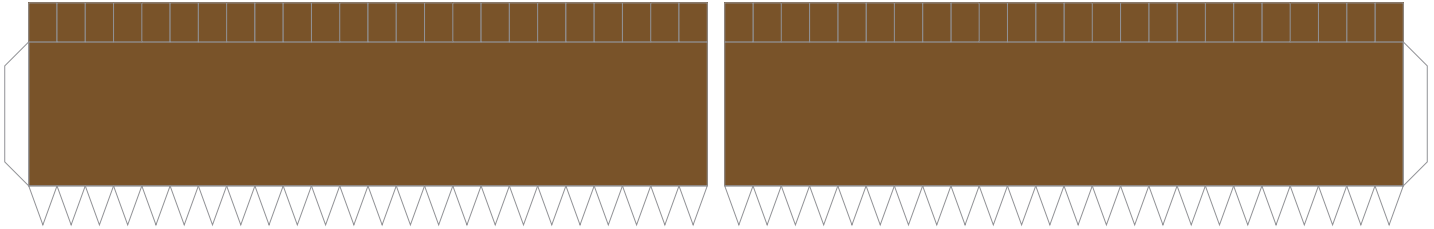
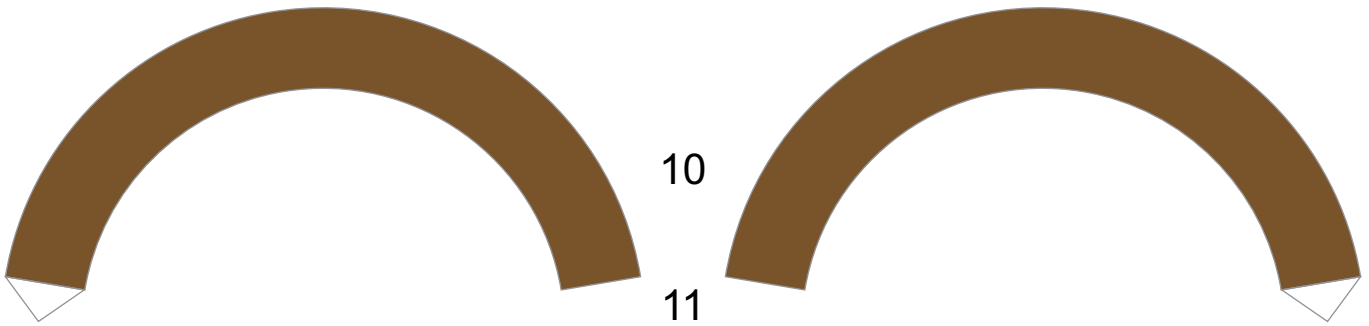
10 in (254 mm)



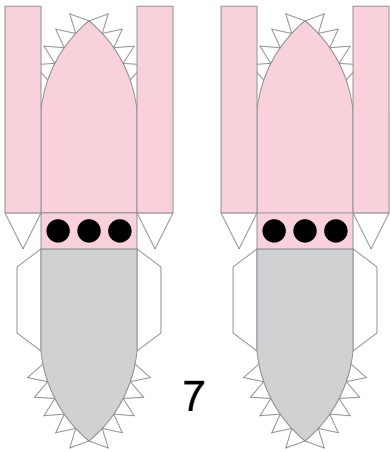
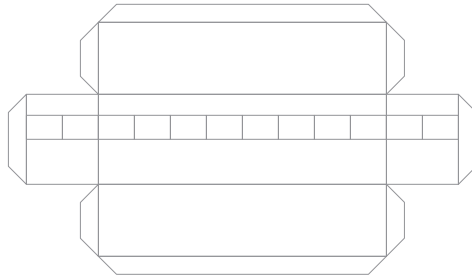


7.5 in (190.5 mm)

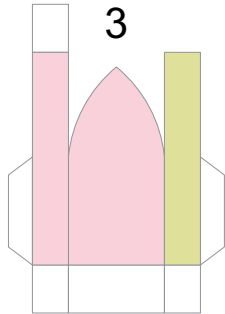
10 in (254 mm)



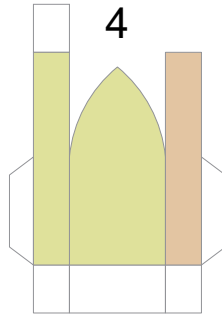
8



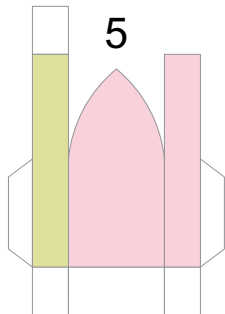
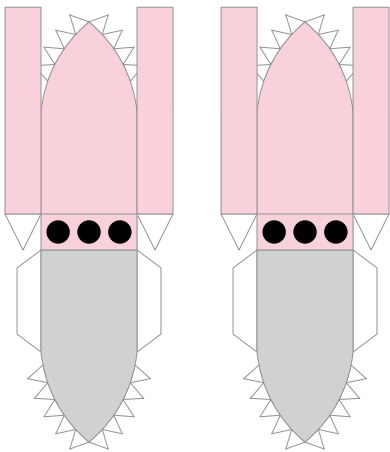
7



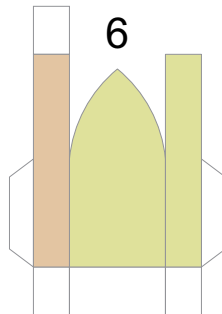
3



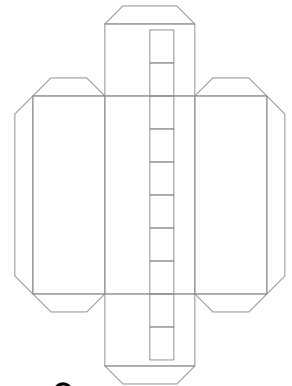
4



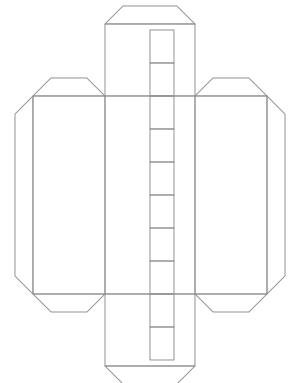
5



6



9



7.5 in (190.5 mm)

10 in (254 mm)