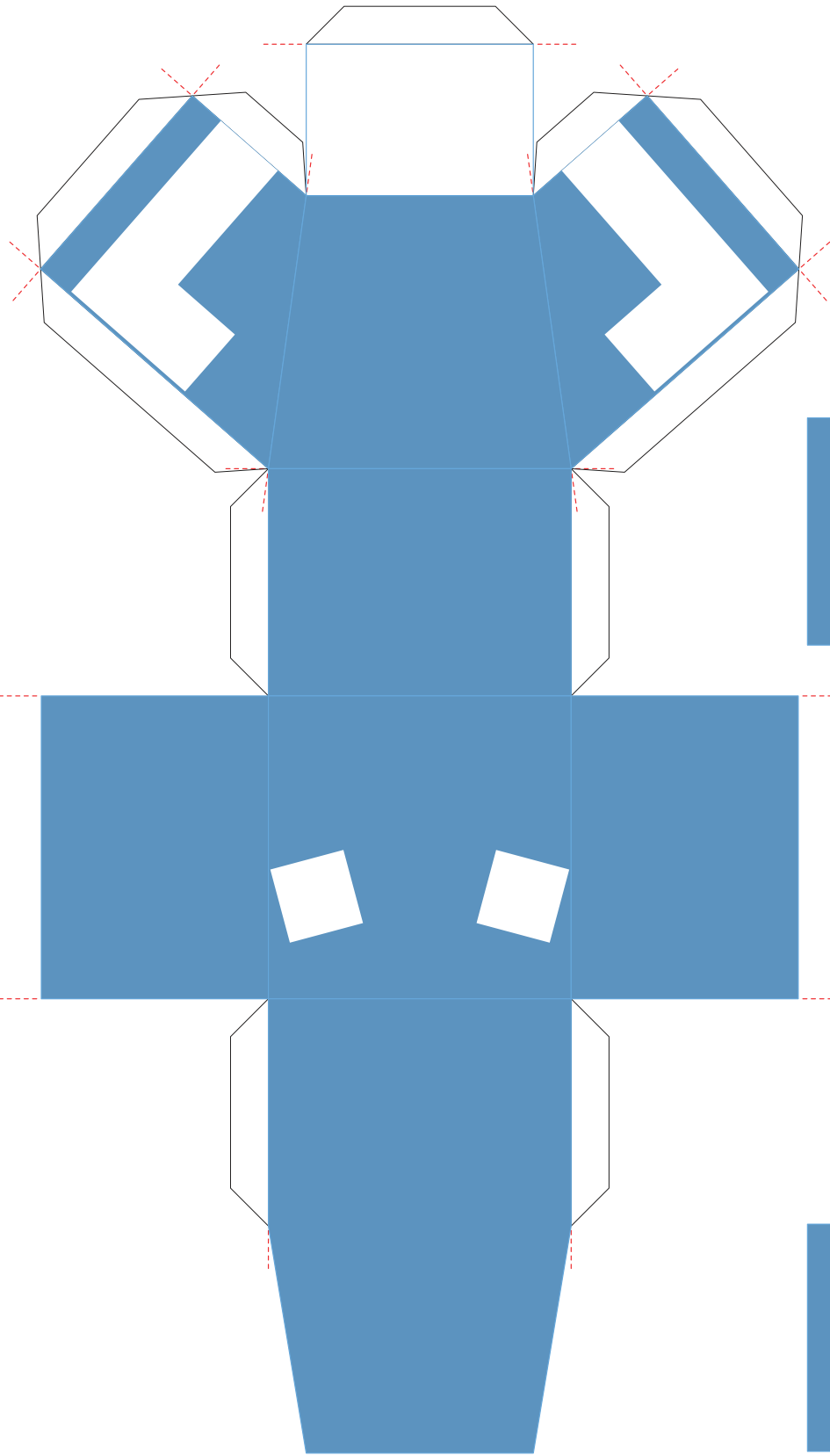
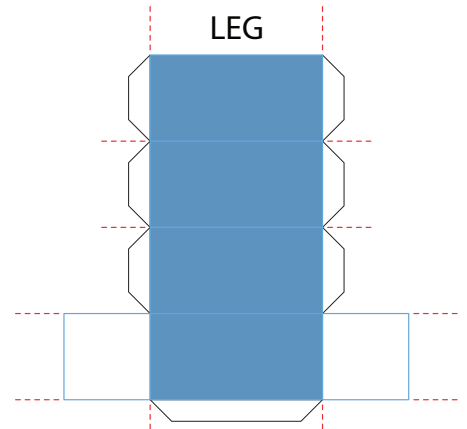


7.5 in (190.5 mm)

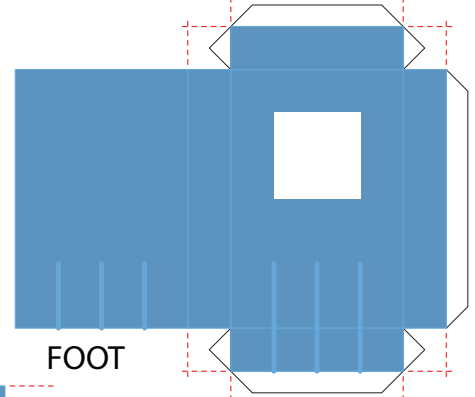
10 in (254 mm)



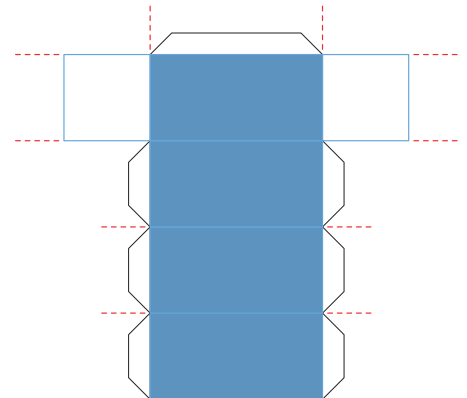
BODY



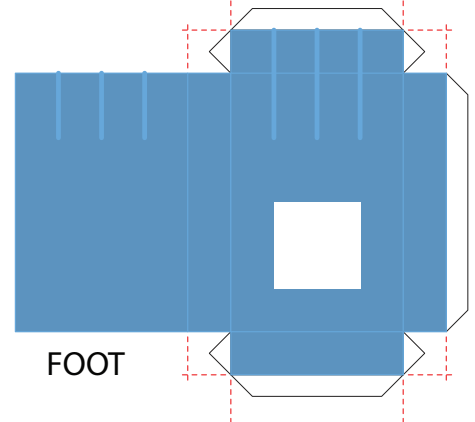
LEG



FOOT



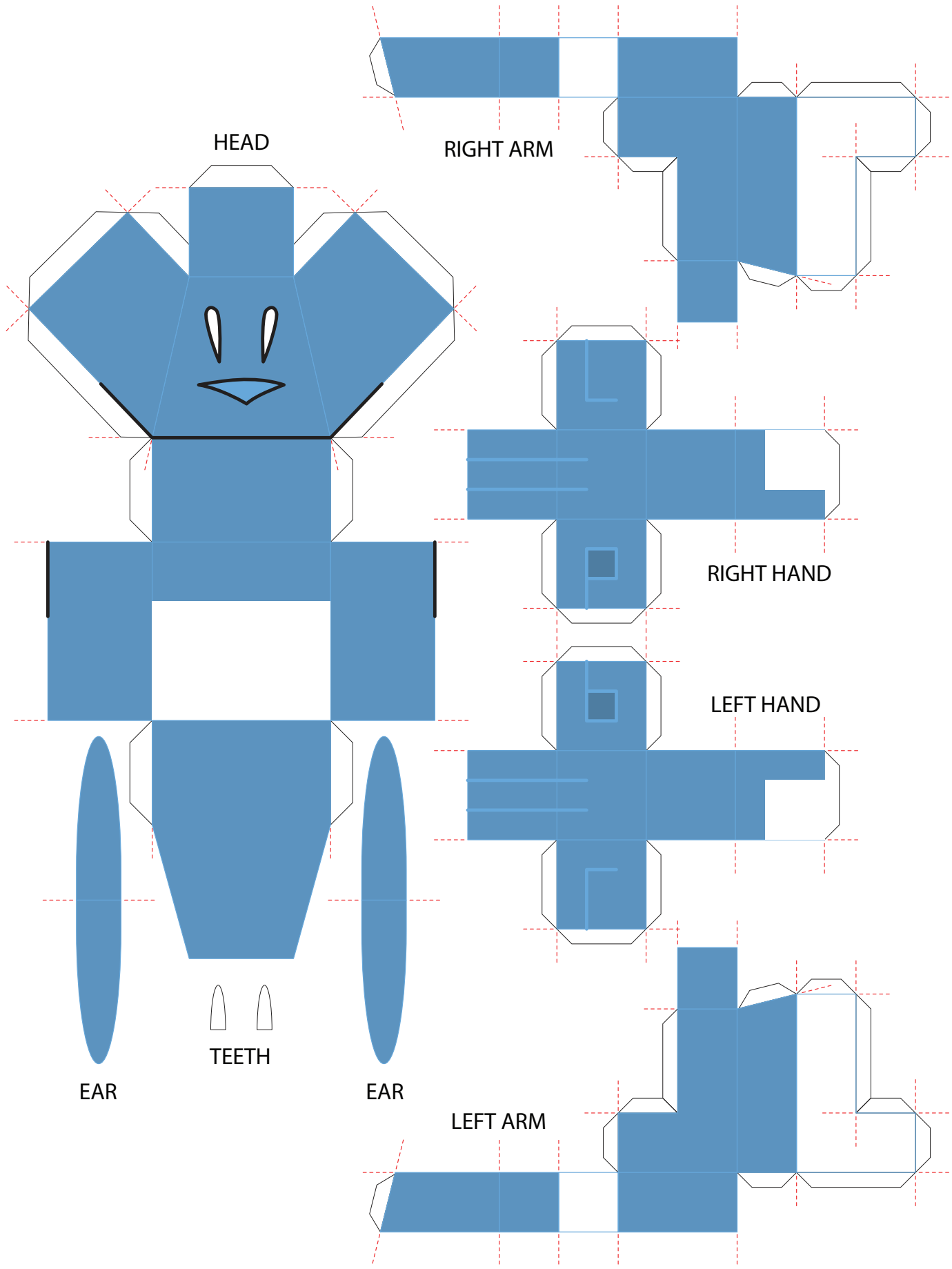
LEG



FOOT

7.5 in (190.5 mm)

10 in (254 mm)



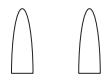
HEAD

RIGHT ARM

RIGHT HAND

LEFT HAND

EAR



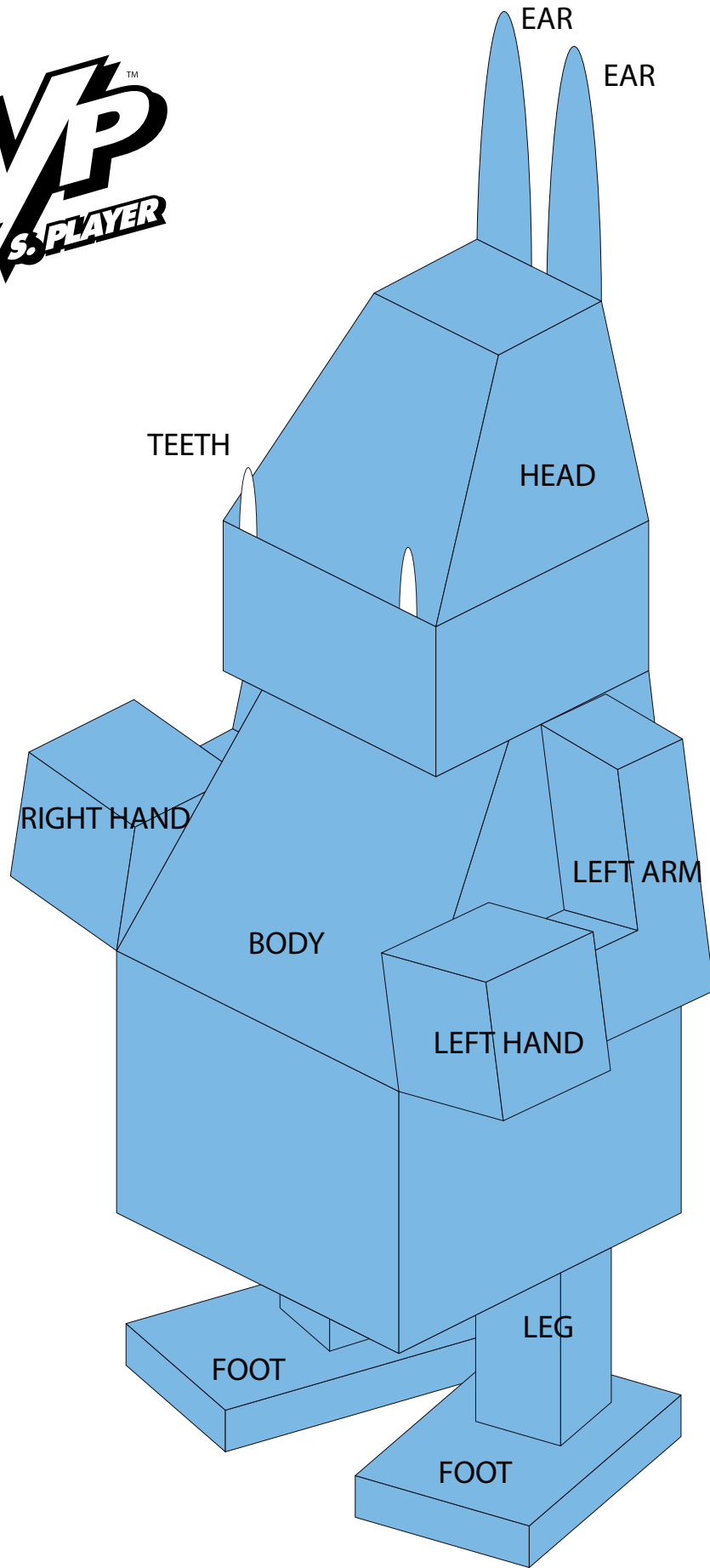
TEETH

EAR

LEFT ARM

7.5 in (190.5 mm)

10 in (254 mm)



Assembling your Skull the Troll model:

Print your model on 67 to 110 lb card stock; regular 20-24 lb printer paper is too thin!

Using the dashed red lines as guides, carefully score each of the parts as indicated. Cut each part out of the page as needed, rather than cutting out all the parts at one time.

Starting with the BODY, fold each scored line away from the printed side of the part. Apply a thin smear of glue to one tab, align the tab with its mating surface and apply pressure to “set” the joint. Repeat, one tab at a time, until the BODY is closed at the top. Set the BODY aside.

Build the HEAD in the same manner as the body. Allow a few minutes for the glue to set well, then glue the HEAD to the top of the BODY. Laying both the HEAD and the BODY flat on their backs on a table will help with alignment. Set the assembly aside.

Build the RIGHT HAND and set it aside. Build the RIGHT ARM, one tab at a time and paying close attention; the ARMS are the trickiest parts of this model, so take your time. Once the RIGHT ARM is done, lay it on a table with the white side down. Note that the top of the RIGHT HAND is the side with the small dark square in the middle. Glue the white square on the RIGHT HAND to the white end of the RIGHT ARM with the dark square on the RIGHT HAND pointed in the same direction as the shoulder (the short leg of the “L” of the RIGHT ARM). Set this assembly aside.

Build the LEFT HAND and LEFT ARM in the same manner; set this assembly aside.

Build the LEGS and set them aside.

OPTION: Before building the FEET, glue a coin or washer inside each FOOT at the toes. This will help prevent the model from falling backward easily.

Build the FEET. Once the glue has dried, glue a LEG to the top of each FOOT in the white square on each FOOT. Set the assemblies aside.

Fold the EARS double with the printed side out. Apply a thin smear of glue to the insides and press together. Stack a couple of books on top of the EARS and allow the glue to dry.

Glue the ARMS and HANDS to the BODY in the white areas.

Glue the LEGS and FEET to the bottom of the BODY in the white squares. Make sure the toes are pointed toward the front of the BODY.

Trim the edges of the EARS if they are uneven. Gently shape the EARS into curves. Glue the square end of each EAR to the HEAD at the top rear edge near the corners, with the EARS curving back.

Glue the square ends of the TEETH to the front of the HEAD along the dark line and near the corners.

Your Skull model is complete. Sit back and admire your handiwork, then go read the latest “PvP” strip!