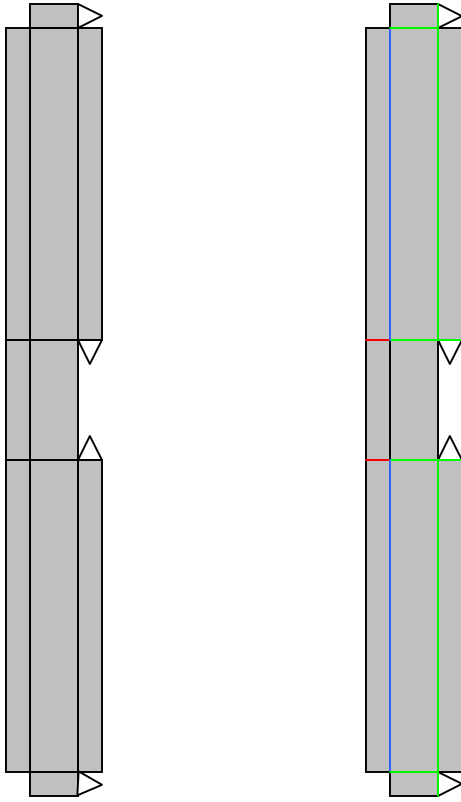


For the Space: 1999 Hand-Laser (laser pistol) by Mike Hungerford

Selector Rail (use)

Color Coded Selector Rail (reference)



Red = cut

Green = peak fold

Blue = valley fold

Selector Rail to be placed on part #5. Rail rear cut section butts against and is glued printed side up to the rear of part #5 after valley fold along those same lines. Valley fold lengths (blue) are glued printed side up on each side of the top edge of the part with ends extending to part #7 (front stop). Peak fold tabs are glued to unprinted rear section with peak fold lengths and the sides acting as a slide rail for part #6 (selector). This allows for the movement of the selector (part #6) rather than having to glue it in place on one or the other selector options. Close the peak fold ends after inserting part #6 and glue tabs to top rail lengths. Rail could instead be put together first and then glued to part #5 with part #6 inside. The selector is a tight fit so that it will not rattle around in the rail. The front of the rail or the selector rail stops are open at the front and are not glued down to part #5 to allow some freedom of movement of the selector. If there is better way to do this, I'm all ears. It is far from perfect but it works for me!

Robert B. McCorquodale