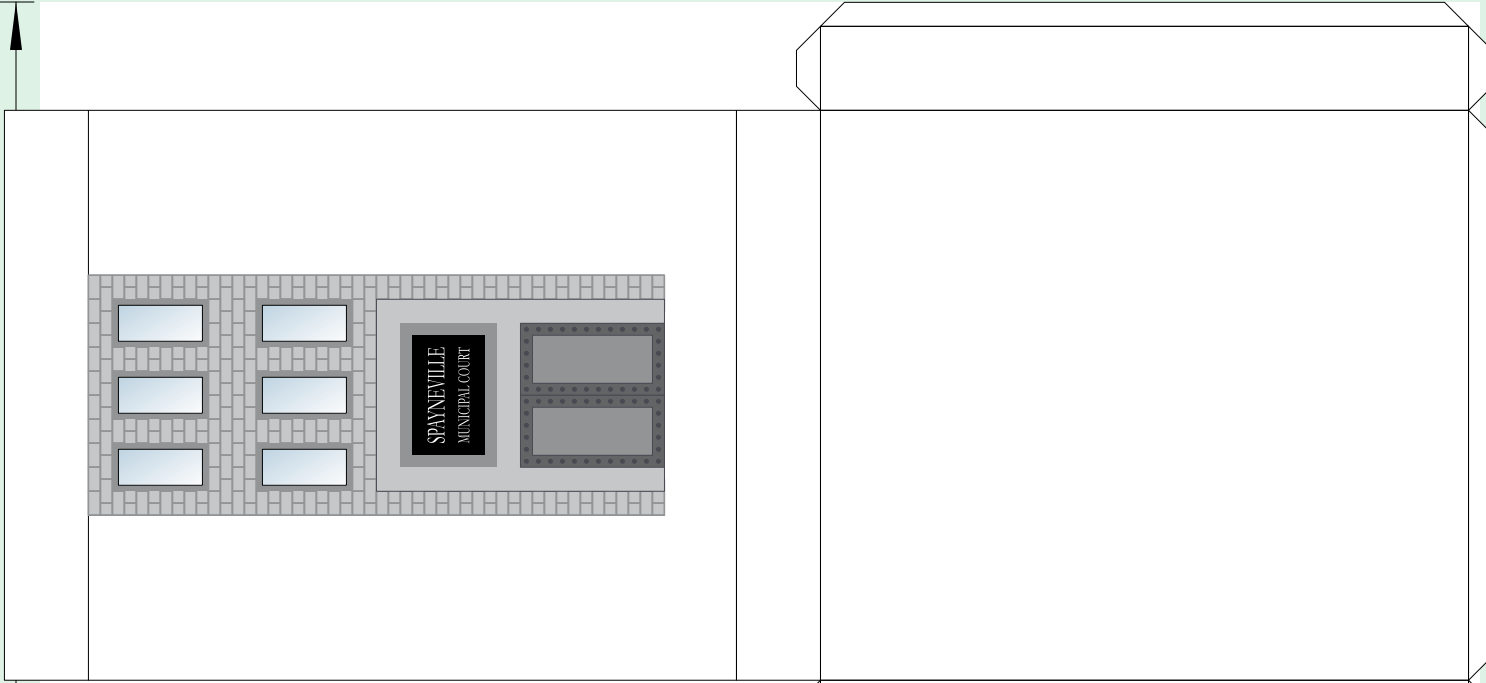
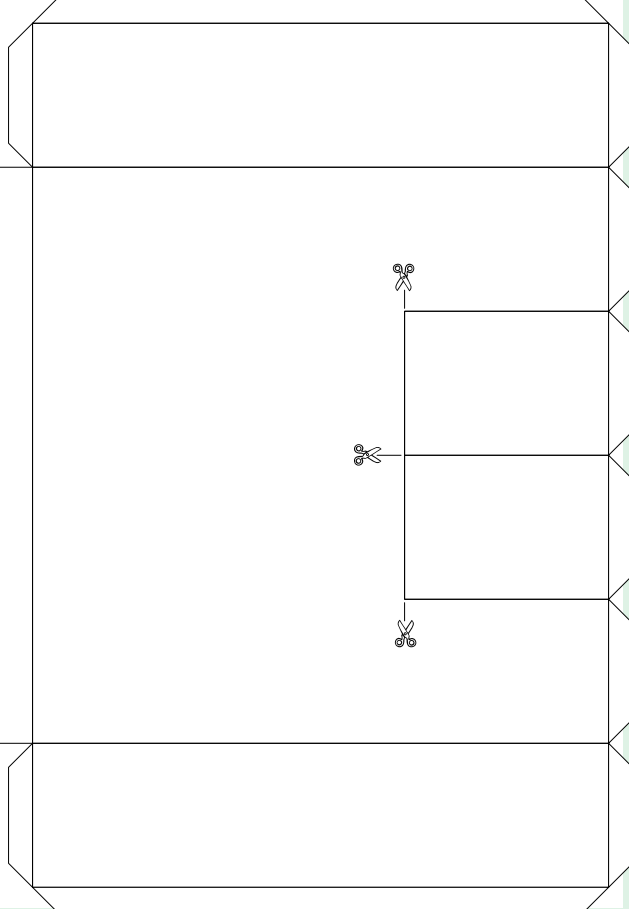
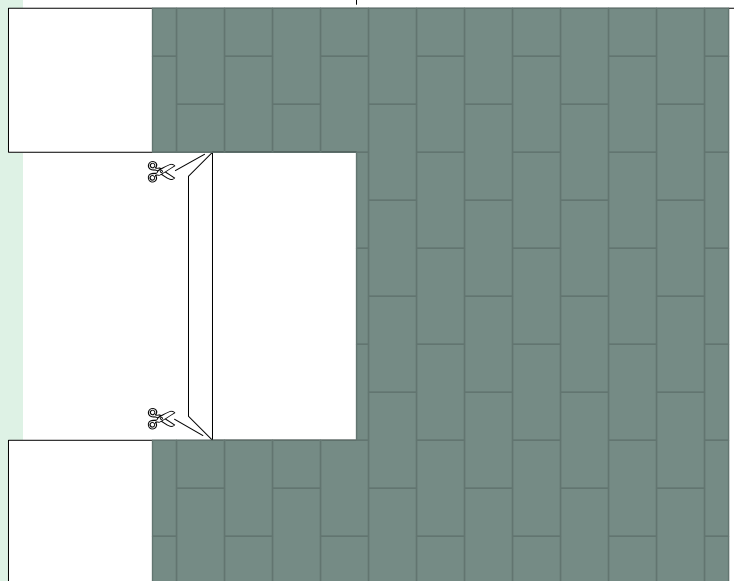
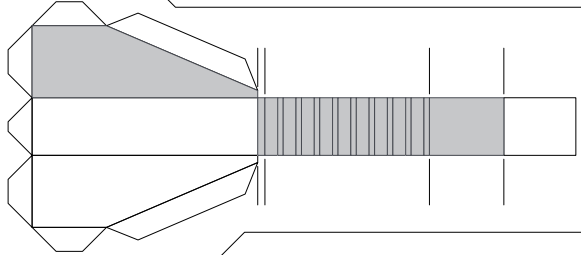
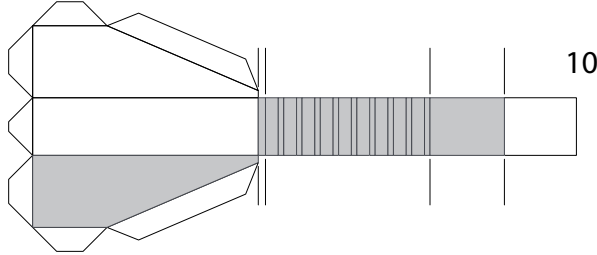


7.5 in (190.5 mm)



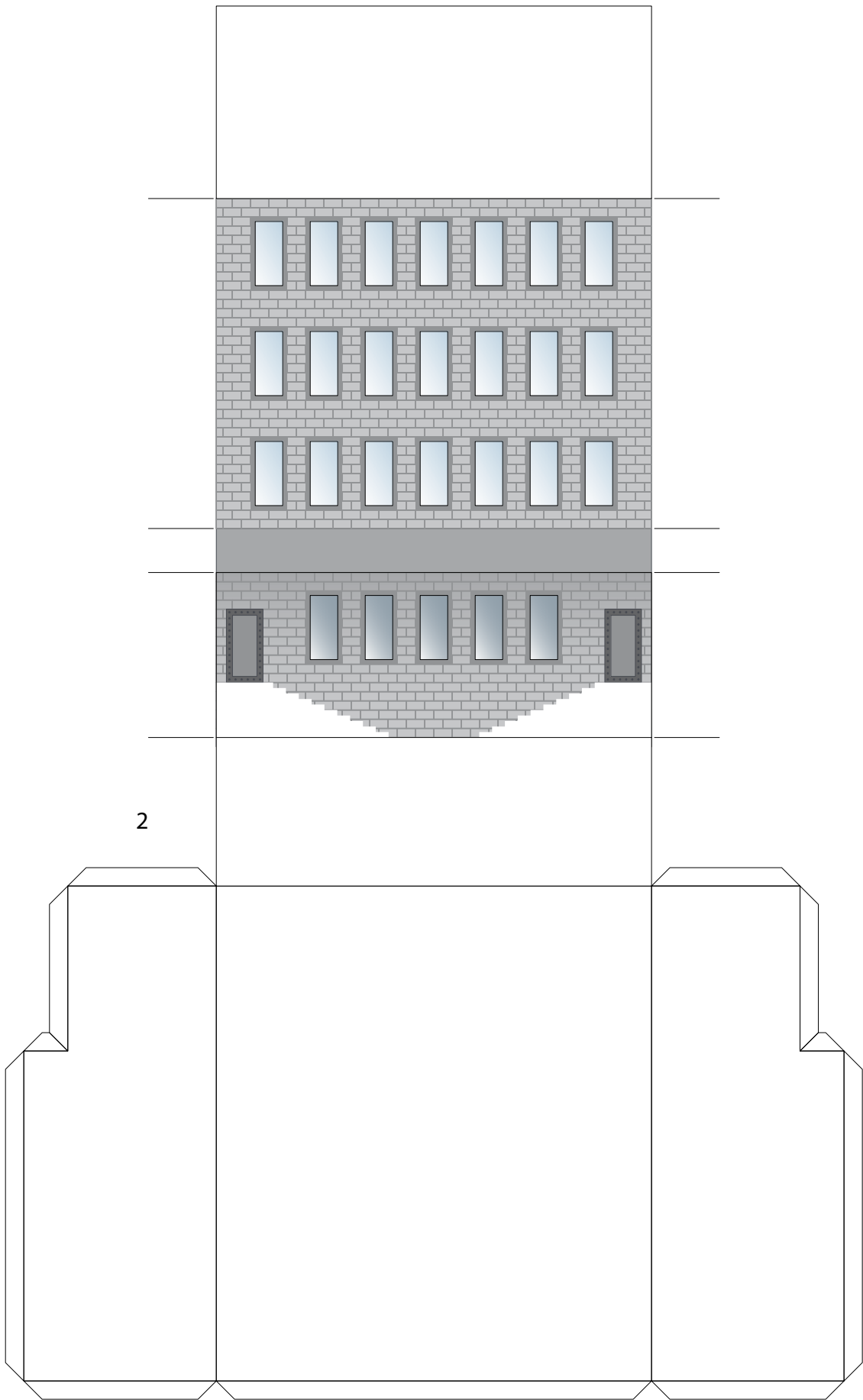
10 in (254 mm)



11

7.5 in (190.5 mm)

10 in (254 mm)

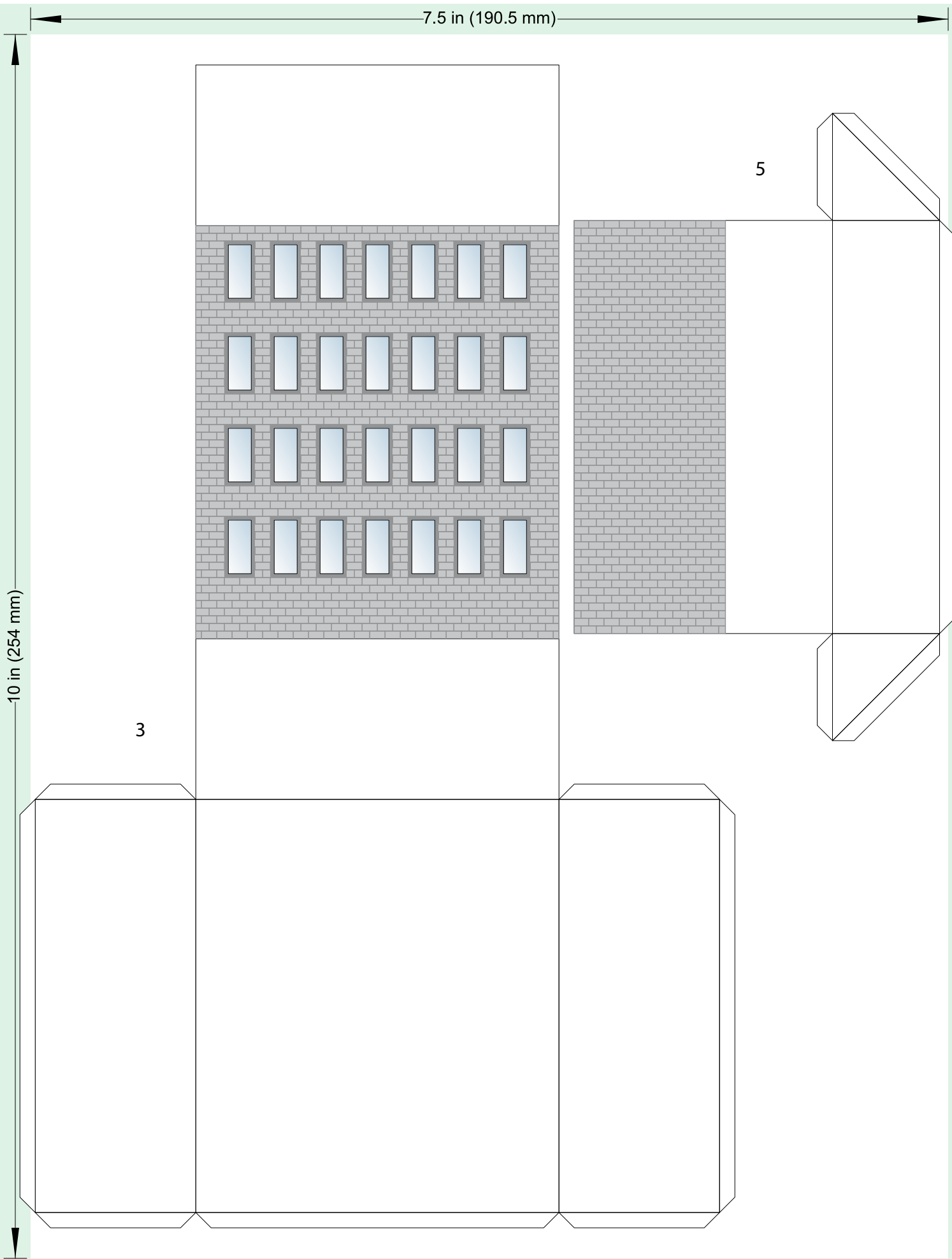


7.5 in (190.5 mm)

10 in (254 mm)

3

5

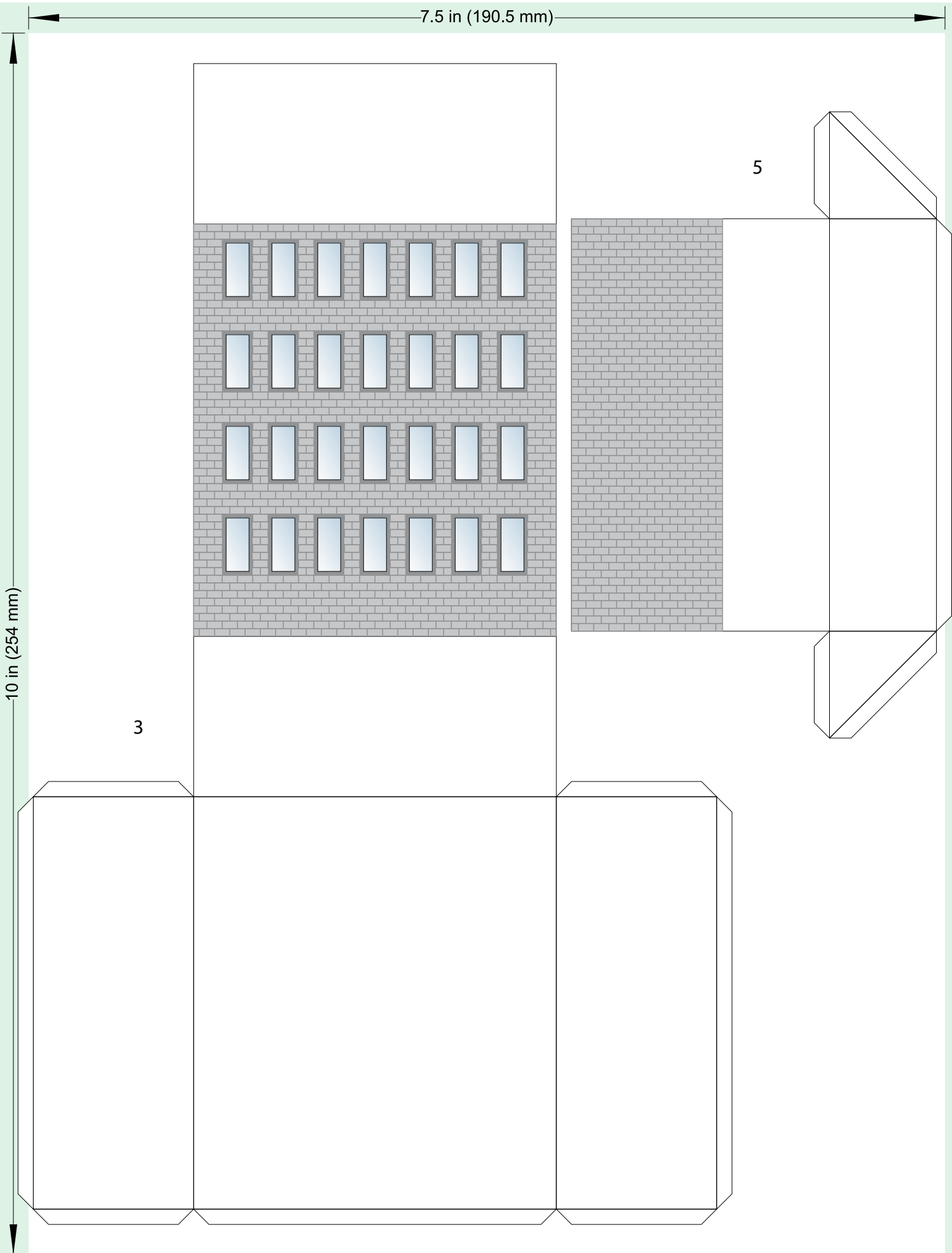


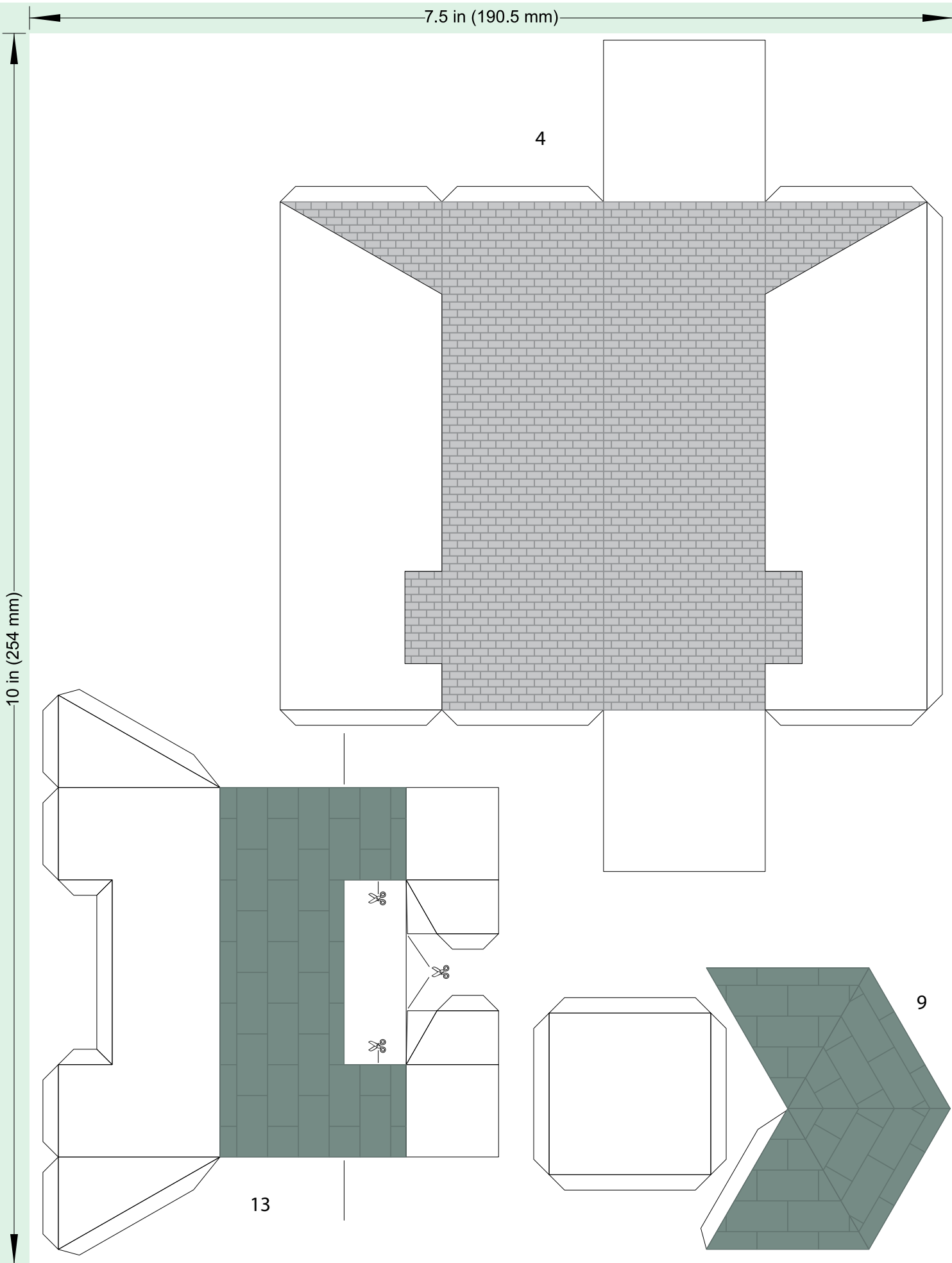
7.5 in (190.5 mm)

10 in (254 mm)

3

5

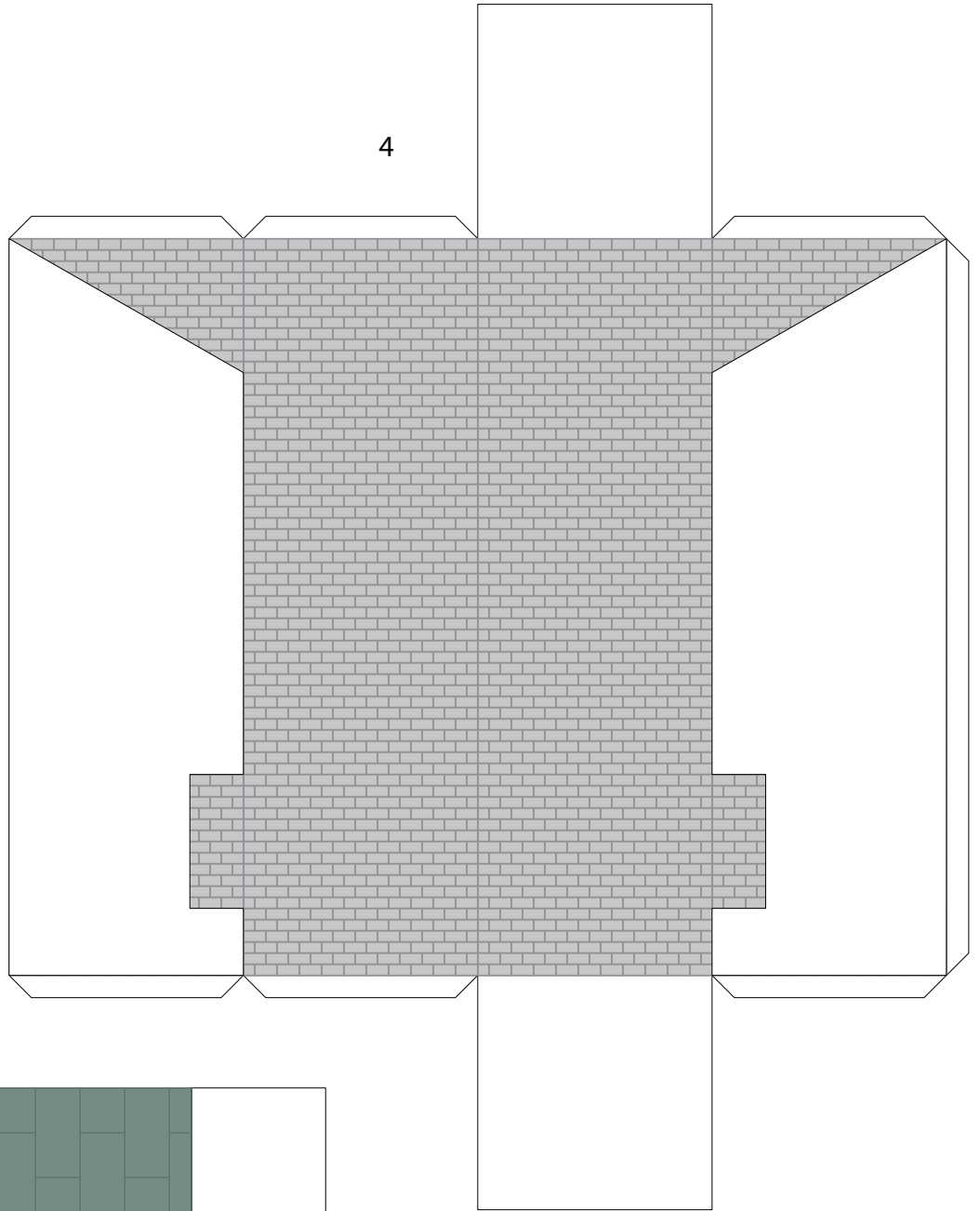




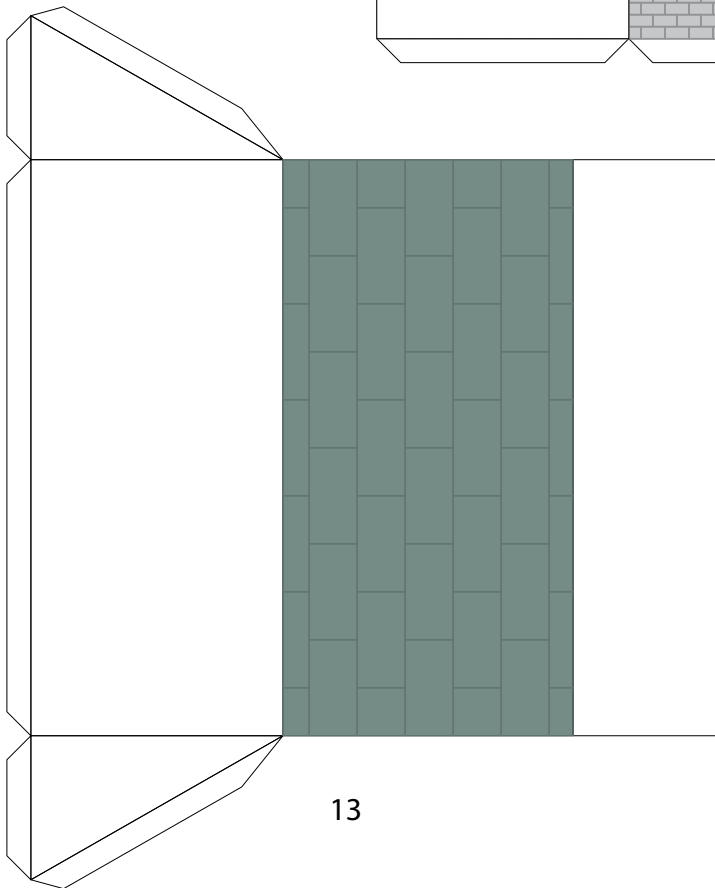
7.5 in (190.5 mm)

10 in (254 mm)

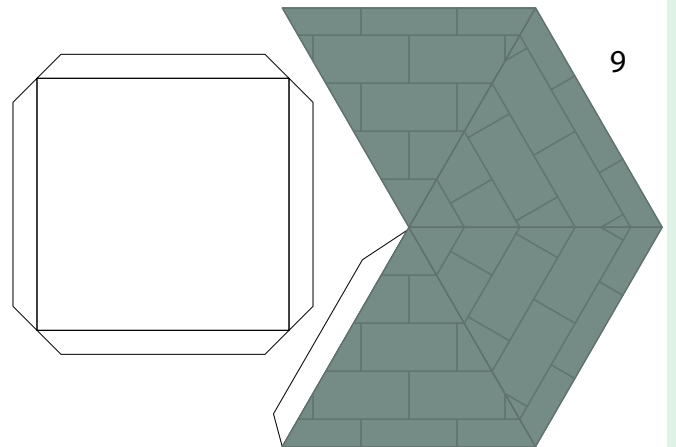
4

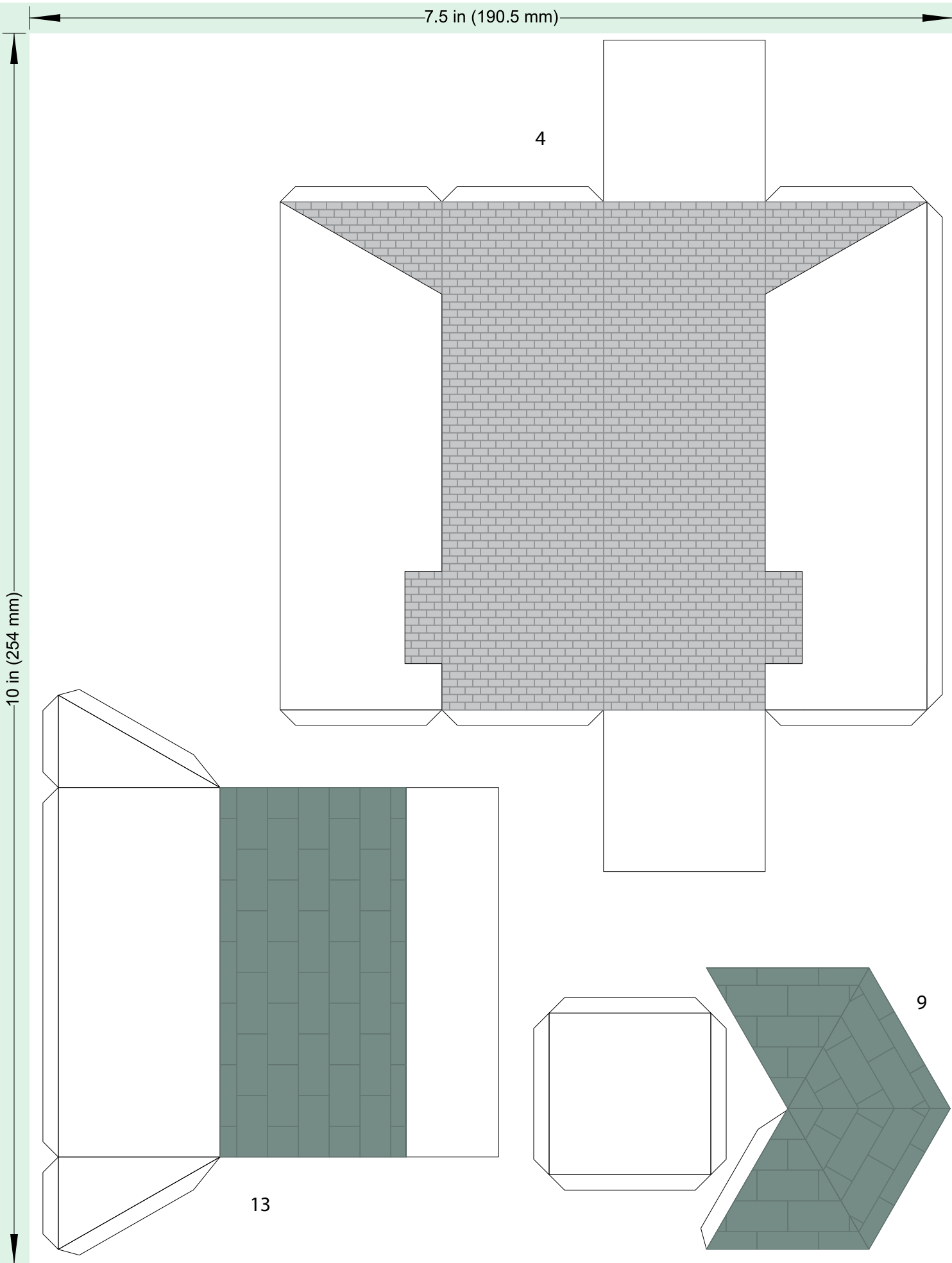


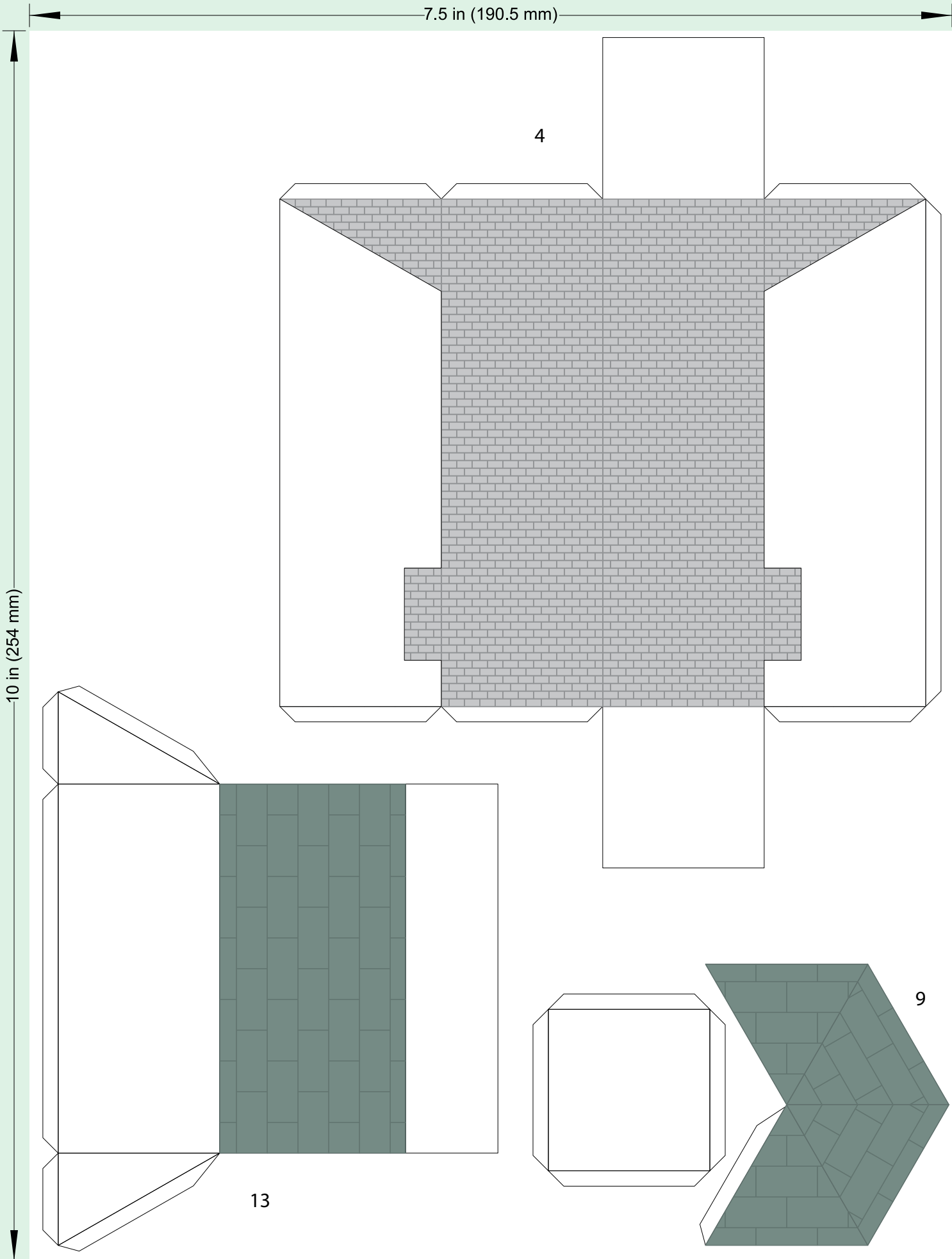
13



9



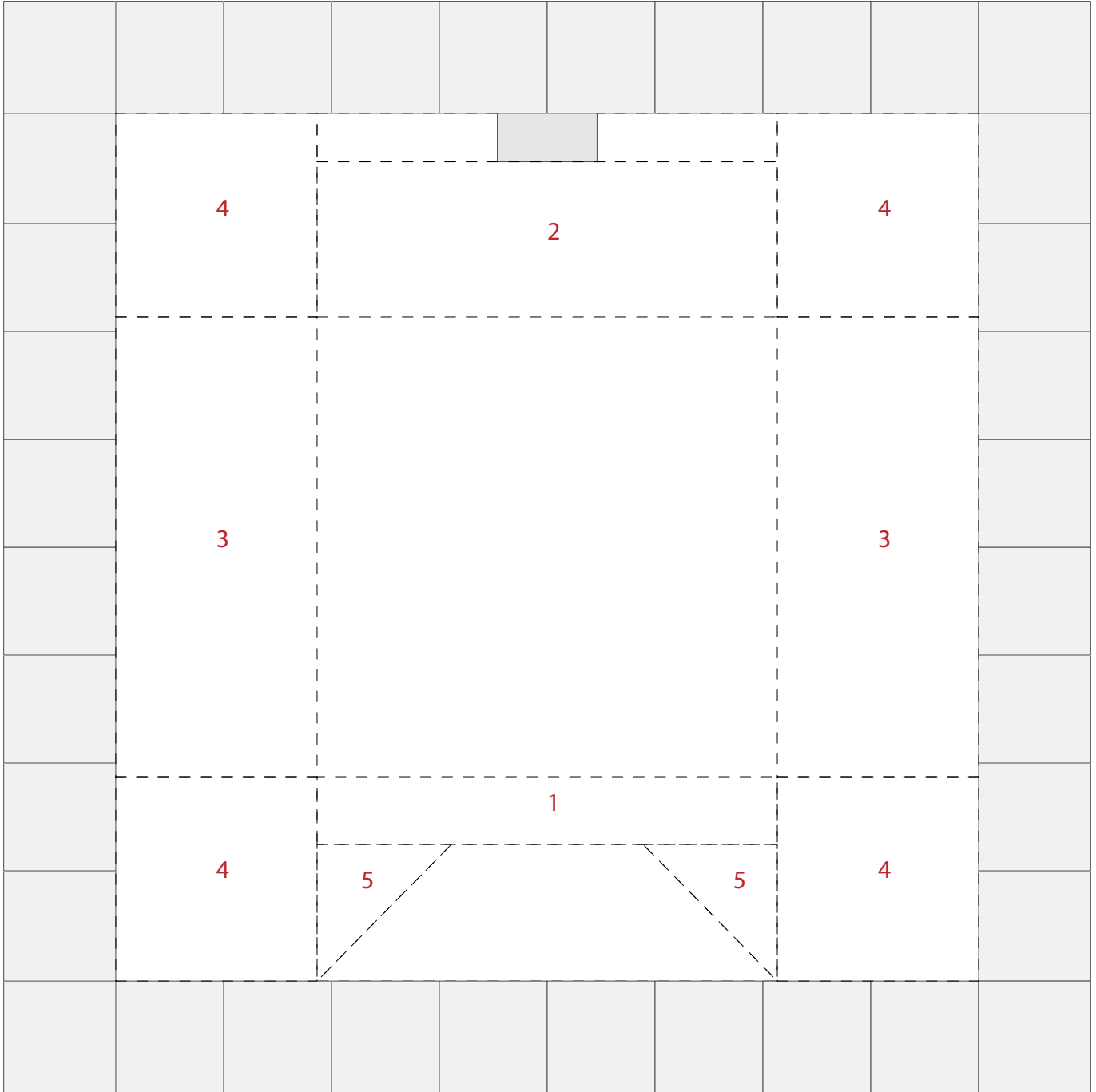






7.5 in (190.5 mm)

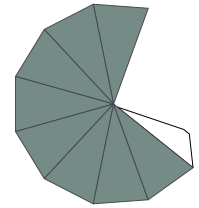
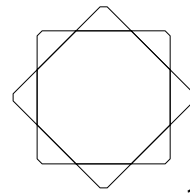
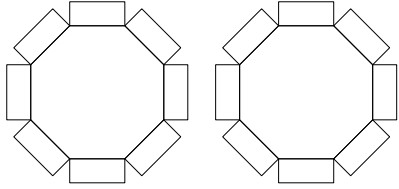
10 in (254 mm)



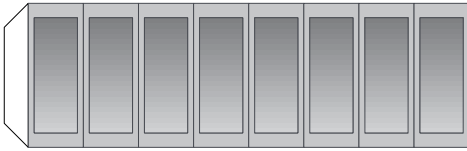
7

7.5 in (190.5 mm)

10 in (254 mm)



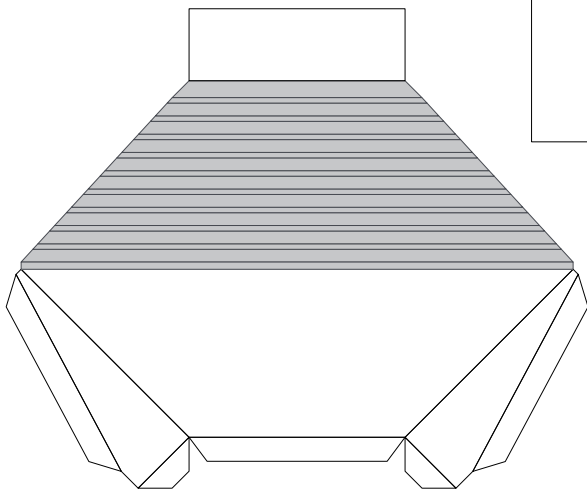
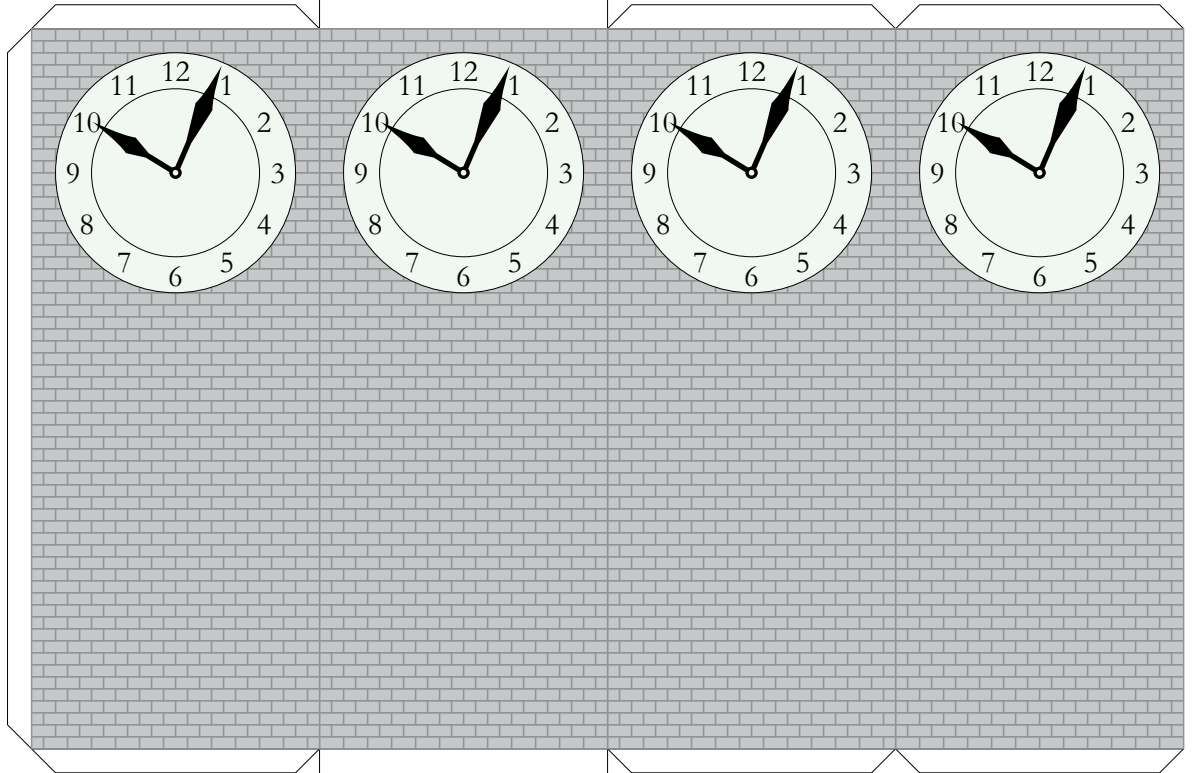
16



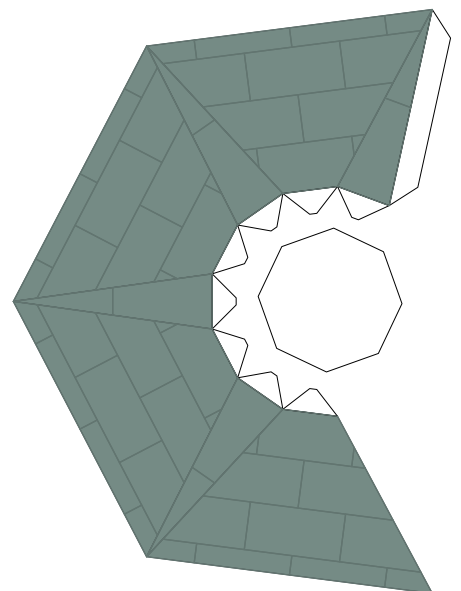
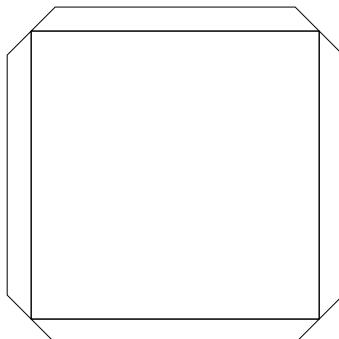
15



12



8



14

7.5 in (190.5 mm)

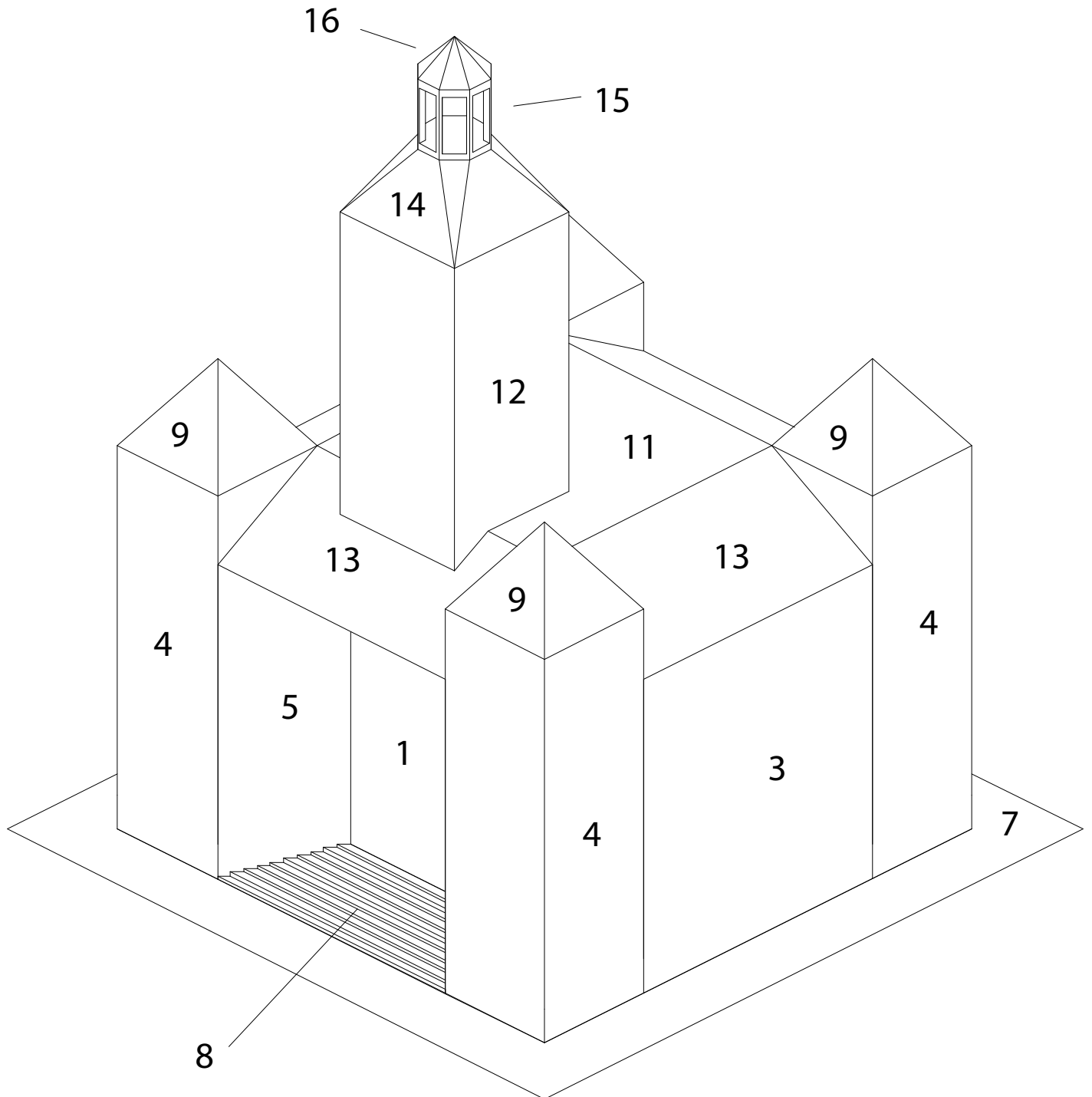
The Spayneville court house as it stands today, after being repeatedly burnt to the ground since 1954. This latest incarnation, completed in 1998, is constructed of heavily reinforced concrete with copper roofs, steel doors, and thick leaded glass, and should withstand any assault short of a direct nuclear strike.

The 1:160 scale model is 18 cm square and measures about 20 cm to the peak of the lantern.

Shape and assemble parts 1, 5 (x2), and 8, then add parts 4 (x2). Shape and assemble parts 2, 4(x2), and 10 (x2). Join these assemblies with parts 3 (x2). Attach the entire assembly to part 7.

Shape and assemble parts 11, 12, and 13 (x4). Attach the assembly to the top of the first assembly, or simply set it in place to retain access to the inside as a stash box.

Shape parts 9 (x4), 14, 15, and 16, and attach them as shown.



10 in (254 mm)

7.5 in (190.5 mm)

10 in (254 mm)

